



Swanbourne Village News

Newsletter No. 161 Dec. 2022 – Feb. 2023

*Merry Christmas
and Happy
New Year*

**BARRY MEETS
SANTA PAWS**



Doggy Diaries December 2022 – February 2023

Well Hello Swanbourne!

Did you miss me last time? I missed you a lot. But I'm back now 😊

We had a little holiday over the summer - I missed Swanbourne then and I missed Swanbourne when we lived away for a while too. Very, very much actually. It made us both realise what a special place it is – we are all very lucky.

And now we are back in the village full-time and we are so happy. I might even be happier about it than Ma, which she says is saying something. One of the first things we did was to go the film night –

my, talk about brilliant! Happy people = happy me. I made myself a sort of hammock bed in the blankets covering people's knees. I LOVED it.

We had a lovely holiday by the sea. I know it is strange, but I much prefer to keep dry. The problem with the sea is that it is wet and it moves – it really, really is not my thing. But I do love the beach and Ma was happy, and I love Ma being happy and I was with Ma, so all was well.

I went away again last week (I know, get me!) and I stayed with the wonderful Pam and John who looked after me when I was a tiny and did my puppy training. My friend Paula (another black lab) lives with them and I adore her. When I allow Paula to think she is boss she lets me share her dog bed which I LOVE.

Paula and I went to see someone very special while I was staying with them – Santa Paws!! It was amazing. He had special treats and I just wanted to get as close to him as possible – as you can see in the photo. My working life continues of course. Not that it feels like work, it is just what I do. I've had to learn all sorts of new things for our new home – like putting the footplate up and down on Ma's stair lift thing and getting the remote control for it. There is never a dull moment which is just the way I like it.

When I next write to you, we will have had Christmas, and New Year and be well into 2023, so I want to wish you all the happiest, kindest and most peaceful time until then.

Look after yourselves and each other.

Love, Barry x



DIARY DATES

- Sat 26th November – Film Night; circus-themed film, 7.00pm at VH (See P5)
- Tues 29th November - Book Club, 8pm at the Betsey (See P6)
- Mon 5th December - SCA Christmas lunch 12.30pm in the VH (See P5)
- Sat 17th December - Carol Singing starting at 5-30pm at Brises Farm (See P5)
- Sat 17th December – Film Night; an appropriate Christmas film (See P5)
- Wed 21st December – ‘Drop in for Coffee’ 10.30 am, Methodist Ch. (See P6)
- Sat 24th December – Xmas Eve Crib Service, 4.00pm, St. Swithun’s
- Sun 25th December – Xmas Day Service 11.00am Rev. Rosie Harper
- Mon 9th January – SCA Afternoon Tea 2.30pm, Methodist Ch. (See P5)
- Wed 25th January - ‘Drop in for Coffee’ 10.30 am, Methodist Ch. (See P6)
- Mon 6th February - SCA Afternoon Tea 2.30pm, Methodist Ch. (See P5)
- Wed 22nd February - ‘Drop in for Coffee’ 10.30 am, Methodist Ch. (See P6)

Parish Council Update and News

#MakeAChange

We are always looking for people to help out, and to be involved and we want to hear your ideas about how we can help to make Swanbourne the best place it can be – for us all. Please do be in touch – either email: clerkswanbournepc@gmail.com or drop a note addressed to us into the Village Shop.

Minutes of our meetings are posted on the Parish Council website – please do have a read.

- **Speeding, Parking, Road safety**

- Cllr. Phil Gomm is progressing a scheme to introduce traffic calming measures in Swanbourne. We are optimistic that it will not take too long to achieve this, and that it will have a very significant and positive impact.
- Traffic calming schemes have been very successful at reducing speed in other locations.
- Please leave pavements clear of bins, cars or anything else, so that we can all use them safely whether we are a pedestrian, have a dog or pushchair or use a wheelchair/mobility scooter.
- Please also be mindful that cars churn up grass verges; use the road for turning or parking.

- **Streetlights**

- We know that some lights are not working fully or at all and we are working to remedy this.

- Your feedback is very helpful - if you spot a broken light, please could you let us know by posting us a message on the Community FB page, or emailing clerkswanbournepc@gmail.com remembering to identify which light it is (either a description or photo would work well).

- **Dog fouling**

- This remains an issue, especially with wet leaves now disguising any mess. Please scoop up any poo into a poo bag and pop into one of the dog waste bins around the village.

- In response to your feedback an additional dog waste bin is planned to be located at the gate between the Betsey Wynne car park and the field behind.

- Bucks County Council dog wardens have been seen patrolling locally. Please be aware that they can levy on the spot fines of £1000 if you don't pick up your dog's poo immediately.

- **Events**

- Thank you for the considerate organisation and running of a number of large and small local events recently.

- All have been very successful and caused minimal disruption.

- **Concerns, Ideas, something to say?**

- We encourage you to be in touch. If it falls within our remit, we will take it on, if not we will make sure that the right person/organisation is made aware and gets your message.

- Email clerkswanbournepc@gmail.com, or leave a note in the shop and it will be passed on to us.

- **Huge thank you and goodbye to Linda Sirett**

- Linda is stepping down from the Parish Council due to other commitments.

- Thank you for all your time and work Linda and for the considerable amount you have brought to the Council, we are going to miss you a lot.

- This means that there will soon be a Councillor vacancy – watch this space.

- **Best Place to live in Buckinghamshire**

- Did you see that Swanbourne was recently judged one of the top 10 best places to live in Buckinghamshire?

- Our village was described as 'tiny but mighty', 'excelling at the essentials' and as having 'all the perks of a rural idyll'.

- Let's look after it!

Our next meeting is on November 23rd in the Village Hall. As always, please let us know if there is anything falling within our remit that you would like raised.

The minutes of our meetings are always posted on the website – do have a look if you are interested.

We wish you a very Happy Christmas, and a healthy and peaceful start to 2023. *Cllr. Jo Hill*

Swanbourne Parish Council www.swanbourneparishcouncil.co.uk

SCA CHRISTMAS LUNCH & TEAS

Please join us for the SCA Christmas Lunch in the village hall on Monday, 5th December at 12.30pm (lunch served at 1.00pm). Afternoon Teas are planned for Monday 9th January and Monday 6th February starting at 2.30pm. Residents of all ages are most welcome. *Anne and Frankie*

Film Club Events

Our plans are as follows: - Saturday, 26th November 2022 a Circus themed biographical film, 3.00pm start...

- Saturday, 17th December 2022 an appropriate Christmassy film.

- Thursday evening 22nd December - A drink at the Betsey to put us in the mood festive sweaters please 6pm to 9pm.

January and February dates will most probably be the last Saturday of each month. We have many suggestions, but please look out for posters nearer to these dates. *Anne and Roger*

Carol Singing

Please join us for the village carol singing on a trailer pulled by a tractor around the village. All are welcome. You should be at Brises Farm at 5.30pm on Saturday 17th December. *Frankie and Ken*

BIRD FLU A reminder that all chickens and other poultry must be kept indoors until further notice due to the current outbreak of bird flu.

BOOK CLUB

Greetings Book Clubbers. Our next meeting will be on Tuesday 29th November at 8pm at the Betsy Wynne and the book we will be discussing is *Three Men in a Boat* by Jerome K Jerome, chosen by Frankie.

'Martyrs to hypochondria and general seediness, J. and his friends George and Harris decide that a jaunt up the Thames would suit them to a 'T'. But when they set off, they can hardly predict the troubles that lie ahead with tow-ropes, unreliable weather-forecasts and tins of pineapple chunks - not to mention the devastation left in the wake of J.'s small fox-terrier Montmorency.'

'With benign escapism, authorial discursions and wonderful evocation of the late-Victorian 'clerking classes', hilariously capture the spirit of their age.' If you have any suggestions for books for future meetings. please let me know.

Jane Rowe

Email: jane.rowe101@btinternet.com

Drop in for morning coffee at the Chapel

These monthly coffee drop-ins at the Methodist Chapel in Nearton End have been a growing success and our next one is on 21st December followed by 25th January. We meet at 10.30am.

We enjoy coffee, biscuits and chat in an informal gathering and everyone is very welcome.

Frankie and Ken

Swanbourne Store & Post Office

December opening hours

Post Office: - 9am till 1pm Monday to Saturday.

Shop: - 8.30am until 6pm Monday to Friday & 8.30 until 1pm on Saturdays.

We will be closing, at 4pm, on Saturday 24th December 2022 and re-opening, at 8.30am on Monday 9th January 2023.

With effect from January 2023, we will be closed on Saturdays.

We would like to take this opportunity to wish you all a Merry Christmas and a healthy and happy New Year.

Jean-Claude & Julie

Village Planning News

22/00370/ALB | Listed building application for 3 new exterior doors | 15 Smithfield End Swanbourne, MK17 OSP - *Pending.*

22/02416/CPL | Certificate of lawfulness for proposed garden room | Glebe House, Swanbourne, MK17 OSH – *Approved.*

22/03329/APP | Householder application for erection of orangery | 4 Old Drovers View, MK17 OFS - *Pending*

22/02289/APP | Change of use of school to mixed use to allow use of part of the building as a wedding venue during school holidays and exeat weekends. | **Swanbourne House School,** Buckinghamshire MK17 OHZ - *Approved*

22/02542/APP | Demolition of redundant farm buildings and five new residential dwellings and all ancillary works | Hensmans Farmhouse Nearton End Swanbourne Buckinghamshire MK17 OSL – *Pending.*

22/01974/APP | The Old Vicarage 2 Winslow Road Swanbourne - Householder application for demolition of existing entrance gate, removal of existing access, creation of new vehicular access and installation of new entrance gate - *Approved*

22/01261/ATC | The Old Vicarage - Several trees (pruning and removal) 2 Winslow Road Swanbourne Bucks – *Approved.*

22/02458/ADP | Submission of details of appearance, landscaping, layout, scale and means of access for proposed agricultural dwelling pursuant to outline planning permission 21/00359/AOP | **Buxlow Farm** Aylesbury Road Swanbourne Buckinghamshire MK18 3LF – *Pending.*

AYLESBURY FESTIVAL CHOIR (*Notice from Jean Tuer*)

Aylesbury Festival Choir's next Concert will be held at 7pm on Saturday, 10th December 2022 when we will be singing Handel's "Messiah". We are fortunate to have four talented soloists to sing with us, Elizabeth Adams, Sarah Anne Champion, Magnus Walker and Jack Holton. We will be accompanied by British Sinfonietta with Ben Giddens playing the chamber organ and the concert will be under the leadership of AFC's Music Director, Nick Austin. The Concert will be held in Aylesbury Methodist Church, Buckingham Street, Aylesbury, HP20 2NQ. Tickets are £15/under 18s £5 or a family ticket is available for £30 (2 adults + 2 under 18s). The tickets can be bought on the door or website: www.aylesburyfestivalchoir.weebly.com

Community names, websites, email and telephone contacts

Swanbourne Village Hall – Please contact Hugo Gilbert to find out more and to book: telephone 07754181522.

Swanbourne Neighbourhood and Countryside Watch

Email swanwatch7@gmail.com or tel: - Mo on 720269 or Doody on 728161.

Newsletter Editors: - Clive and Linda Rodgers. Print costs funded by Swanbourne Parish Council. Printed by Harlequin Press. Each edition of the Newsletter covers three months. The editors reserve the right to make corrections for accuracy (e.g., spelling, punctuation and grammar) in items submitted.

Village information via email circulation - Information is circulated by email by Peter Hampton. If new to the village, you may add your name to the list. Notices should be forwarded to Peter at the following email address: - swanbournemail@gmail.com

Swanbourne Community Association - Tel. Frankie Fisher (Chair) on 720454.

Website: - www.swanbournecommunityassociation.com

Swanbourne Facebook Village Community Group: - Administrator: Deborah Barrow. Please email via the Parish Council website

www.swanbourneparishcouncil.co.uk or direct message via Facebook

<https://www.facebook.com/groups/44360210626000/>

Swanbourne Estate - The Estate Manager is Tom Finchett. Tel. 720256 email:

office@swanbourneestate.co.uk

Swanbourne History Group - Tel. Ken Harris (Chair) on 720454, email

ken.kelston1@gmail.com History Website: - www.swanbournehistory.co.uk

History Webmaster is Clive Rodgers, email Swanbourne13@gmail.com

The Store and Post Office - Jean-Claude and Julie Blanc are the proprietors. The Store is open from 8.30am to 6pm on Monday to Friday and from 8.30am to 12.30pm on Saturdays. The Post Office is normally open from 9.00am until 1.00pm from Monday to Saturday swanbourne.store@gmail.com Tel. 720288

Betsey Wynne Pub - www.thebetseywynne.co.uk Tel. 720825 Reservations for dining are usually made on-line.

Swanbourne Parish Council - Parish Clerk (Jo Tudor) Email: -

clerkswanbournepc@gmail.com Parish Council Website:

www.swanbourneparishcouncil.co.uk

Play Out and Sports Swanbourne - Sasha Savage, Vicki Price and Ria Deane. Call

Sasha on 07949973626 www.facebook.com/playoutswanbourne

Playing Fields - Please contact the Parish Clerk if issues arise.

Church Wardens - St. Swithun's Church; David Blunt and Jon Walker

Swanbourne Burial Authority - Swanbourne Parochial Church Council, tel. David Blunt 720397 email: david.blunt@hart-house.net

Medical Prescription Deliveries from Winslow Dispensary - The online system for requesting repeat prescriptions is now through the Evergreen Life system. If

there are any queries you may email: - 3whealth.patientaccess@nhs.net

Alternatively, you may telephone 713434 to request a repeat or email: - prescriptions.norden@nhs.net listing the medication requested.

Norden House maintains a patient delivery service for prescriptions the over 60s in Swanbourne (except for patients who collect from Lloyds Pharmacy) which is not available if registered at Whitchurch.

Winslow Community Bus - Normally, you can get the Community Bus in Winslow any Friday or Saturday morning at 9.15am to get to Aylesbury for just after 10 o'clock – dropping off by Sainsbury's or the bus station, then return 12.15pm depart from bus station (+ High St pick up on a Friday). Free with a bus pass. Full details on the website: [Bus Services - Winslow and District Community Bus - Winslow and District Community Bus, Winslow, Buckingham \(winslowbus.com\)](http://Bus Services - Winslow and District Community Bus - Winslow and District Community Bus, Winslow, Buckingham (winslowbus.com))

Alternatively, telephone Lynne King on 07483 336440.

Newspaper and Magazine Deliveries - Get newspapers and/or magazines delivered in the morning to your home anywhere in Swanbourne! Wedelivernews.com Ltd. is based at 52, High St., Winslow. If you wish to go on their delivery list, phone or text Sue on 07834902196 or email info@wedelivernews.com

Karate Club - The club is run by Sensei Tom Finchett a 2nd Dan British Karate Association, with over 30 years of experience in Karate, tel. 07974 029961 or hakagurekarate1@gmail.com

Book Club - This is organised by Jane Rowe; for further details email: jane.rowe101@btinternet.com

SWANBOURNE'S WINTER REFUSE COLLECTION DATES

<i>Date</i>	<i>Food waste</i>	<i>Recycling Bin</i>	<i>Waste Bin</i>	<i>Garden waste</i>
<i>Tuesday Nov 29</i>	COLLECTION	No Collection	COLLECTION	No Collection
<i>Tuesday Dec 06</i>	COLLECTION	COLLECTION	No Collection	COLLECTION
<i>Tuesday Dec 13</i>	COLLECTION	No Collection	COLLECTION	No Collection
<i>Tuesday Dec 20</i>	COLLECTION	COLLECTION	No Collection	No Collection
<i>Thursday Dec 29</i>	COLLECTION	No Collection	COLLECTION	No Collection
<i>Thursday Jan 05</i>	COLLECTION	COLLECTION	No Collection	No Collection
<i>Wednesday Jan 11</i>	COLLECTION	No Collection	COLLECTION	No Collection
<i>Tuesday Jan 17</i>	COLLECTION	COLLECTION	No Collection	No Collection
<i>Tuesday Jan 24</i>	COLLECTION	No Collection	COLLECTION	No Collection
<i>Tuesday Jan 31</i>	COLLECTION	COLLECTION	No Collection	COLLECTION
<i>Tuesday Feb 07</i>	COLLECTION	No Collection	COLLECTION	No Collection
<i>Tuesday Feb 14</i>	COLLECTION	COLLECTION	No Collection	COLLECTION
<i>Tuesday Feb 15</i>	COLLECTION	No Collection	COLLECTION	No Collection
<i>Tuesday Feb 22</i>	COLLECTION	COLLECTION	No Collection	COLLECTION

NEW SCA LOTTERY DRAW – MONDAY 5th DECEMBER

The first draw of the Swanbourne Community Association (SCA) Lottery was held in the summer.

Please note that here will also be another draw held during the SCA Christmas Lunch event on Monday December 5th.

Archaeological Garden Finds – How old are clay pipe fragments?

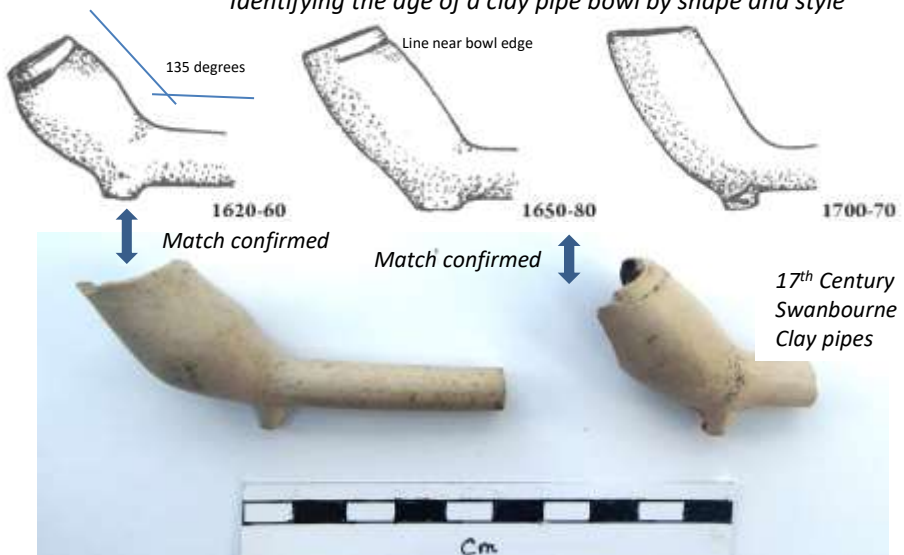
As we weed and clear last year's dead plants and weeds from our borders, a lot of soil is exposed to the elements. Heavy rain may then start to wash out some archaeological artefacts. These will most likely be mainly pot sherds, but white fragments of ancient clay pipes have also be found in Swanbourne.

Pipes of clay were first smoked in England after the introduction of tobacco from Virginia in the late 16th Century. Sir Walter Raleigh (a founder of colonies in the New World) was one of the first to promote this novel habit.

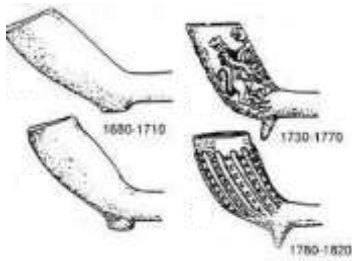
The Editors have found numerous clay pipe fragments while gardening, and by following some general rules on pipe shape we are able to date them.

At tobacco was expensive, the 16th century pipes were quite small with the pipe bowl pointing away from the pipe stem at about 135 degrees. As we go through the 17th and 18th centuries, tobacco became cheaper - so pipes became larger with the bowls becoming more upright. By the 19th century, the bowls were becoming closer to 90 degrees from the stem. Also, smooth pipe bowls slowly gave way to ornamental shapes on the bowl outsides (below and P.11)

Identifying the age of a clay pipe bowl by shape and style



Above is a photograph of two clay pipes which were found in Nerton End. Identification (confirmed by Bucks County Museum) dates them to mid 17th Century. Perhaps the last persons to smoke them were alive at the time of the English Civil War (1642-1651) when Swanbourne was ransacked by Royalist troops some 370 years ago! During the 18th Century, pipe bowls became upright, larger and more ornamented. Another clay pipe is illustrated (P.11).



An 18th Century Swanbourne clay pipe with some bowl ornamentation.

Photo (above right) is another clay pipe from Swanbourne with a more upright, ornamented bowl suggesting an 18th Century age. This identification has also been verified by Bucks Museum.

Clive

Wildlife Watch – Wild Parrots and other Invasive Species

PARROTS - In recent months, many of us will have noticed at least one wild “parrot” very happily living in Swanbourne. It’s actually a ring-necked parakeet, a bird which is native to the Indian sub-continent and sub-Saharan Africa. So, what’s it doing in Swanbourne and how did it get here? Well, we don’t know for certain, but in the late 1960s and early 1970s, a few pet birds escaped from private collections and went into London. Then they began to breed and spread out, with their population in Britain now thought to be around 7,500 birds.



INVASIVE – The Swanbourne parakeet in the garden of ‘Kelston’, Mursley Rd

While parakeets are vulnerable in cold winters, the urban environment is warmer - plus our winters are becoming warmer..... Unfortunately, they have an aggressive behaviour towards our native birds and have even been known to kill bats. They are an invasive species.

DEER - The muntjac deer was introduced from Asia to Woburn Park in Bedfordshire at the start of the 20th century and rapidly spread into the surrounding area. It is now a common animal across southeast England and can be found in woodland, parkland and even gardens. Another invader which may be seen locally is the Chinese water deer.



INVASIVE - Muntjac deer running in the Editor’s Garden on 18th November

Invasive Species contd. From P. 11 Muntjac deer eat the shoots from shrubs, as well as woodland herbs and brambles. This clearing of woodland understorey has been linked to declines in some of native species such as nightingales. They breed all year-round and are known as 'barking deer' because of their dog-like calls.

SQUIRRELS - Originally a native of North America, grey squirrels were released in Great Britain in 1876 carrying a squirrel pox virus which is usually fatal to out native



INVASIVE - A grey squirrel photographed in the Editor's Garden on 19th November



Above: **NATIVE** red squirrels were forced out of Swanbourne by the greys. Photographed in the Isle of Wight.

red squirrel. In Swanbourne, greys had replaced reds by the 1950s and there are only few populations of reds left in England and Wales - mainly in the Lake District and island outposts of Anglesey and the Isle of Wight. Thankfully, the reds are still relatively common in Scotland. Unlike the reds, the greys often strip bark from trees, damaging and even killing them. Hence, greys are classed as pests and it is legal to humanely reduce their numbers.

LADYBIRDS - Originally from Asia, the harlequin ladybird first arrived in the UK in 2004, and has become common in southern England (particularly in towns and gardens). It is able to out-compete our native ladybirds for aphid-prey and will also eat other ladybirds' eggs and larvae. It can have multiple broods throughout the year, giving it a competitive edge.

They have very variable colouring - with up to 21 black spots on a red or orange background or with two or more red spots on a black background.

Clive

INVASIVE Harlequins may be many colours with multiple spots



NATIVE 7 and 2 spot ladybirds often get eaten by harlequins



It is helpful for wildlife research to record any interesting wildlife sightings, both native and invasive (incl. a photo if possible). See how on the Bucks and MK Environmental Records website:

www.bucksmkerc.org.uk